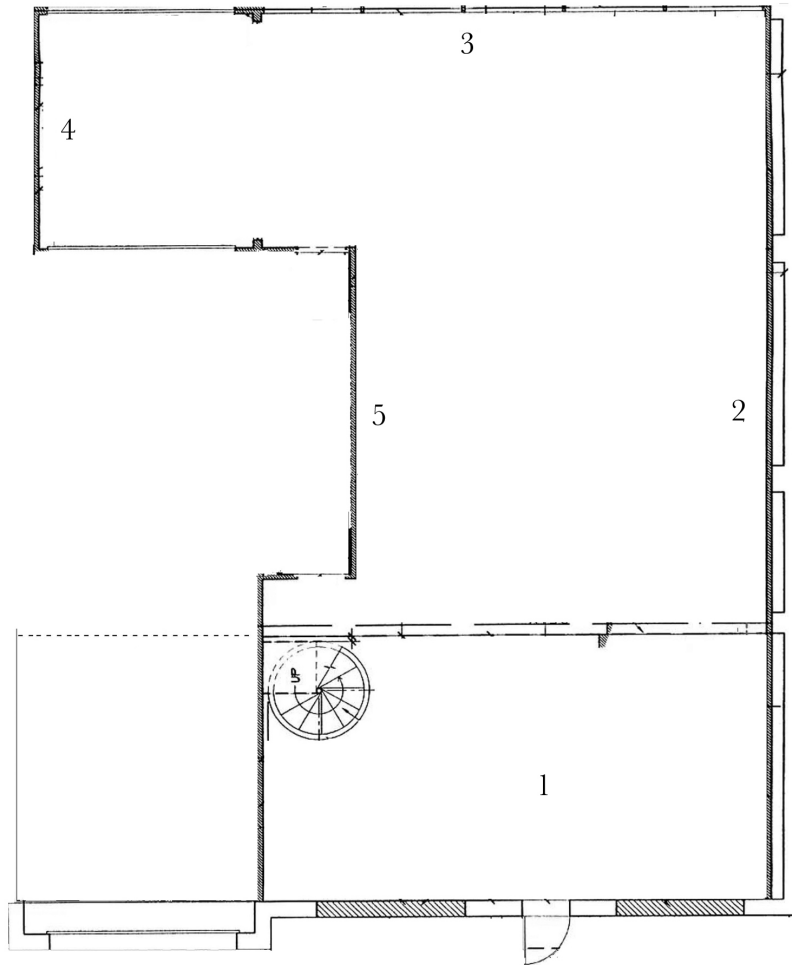




WHITE FLAG PROJECTS

Daniel Lefcourt: Mockup

April 19 – May 26, 2012



1- *Mockup*, 2012
Fiberboard, sawdust, graphite, wood, hardware
152 x 257 x 176 inches

2- *Active Surplus*, 2012
Fiberboard, hardware
2 x 288 x 1 inches

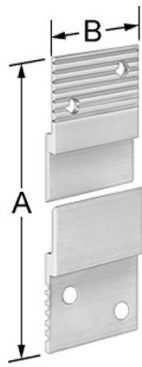
3- *Plot Fill Framed*, 2012
Fiberboard, graphite
19 x 25 x 2.125 inches each

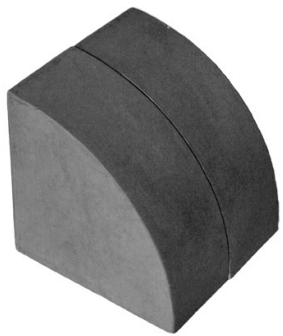
4- *Passive Surplus*, 2011
Sawdust, graphite, debris, projector, fiberboard panels and pedestal
Dimensions variable

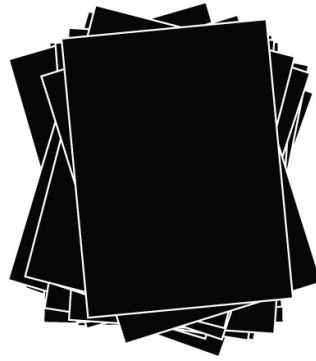
5- *Mockup*, 2012
Fiberboard
72 x 96 x 6 inches

All artworks courtesy the artist and Mitchell-Innes & Nash, New York



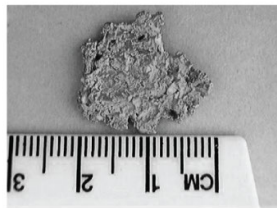






The first of these is the...
The second is the...
The third is the...
The fourth is the...
The fifth is the...
The sixth is the...
The seventh is the...
The eighth is the...
The ninth is the...
The tenth is the...
The eleventh is the...
The twelfth is the...
The thirteenth is the...
The fourteenth is the...
The fifteenth is the...
The sixteenth is the...
The seventeenth is the...
The eighteenth is the...
The nineteenth is the...
The twentieth is the...
The twenty-first is the...
The twenty-second is the...
The twenty-third is the...
The twenty-fourth is the...
The twenty-fifth is the...
The twenty-sixth is the...
The twenty-seventh is the...
The twenty-eighth is the...
The twenty-ninth is the...
The thirtieth is the...
The thirty-first is the...
The thirty-second is the...
The thirty-third is the...
The thirty-fourth is the...
The thirty-fifth is the...
The thirty-sixth is the...
The thirty-seventh is the...
The thirty-eighth is the...
The thirty-ninth is the...
The fortieth is the...
The forty-first is the...
The forty-second is the...
The forty-third is the...
The forty-fourth is the...
The forty-fifth is the...
The forty-sixth is the...
The forty-seventh is the...
The forty-eighth is the...
The forty-ninth is the...
The fiftieth is the...
The fifty-first is the...
The fifty-second is the...
The fifty-third is the...
The fifty-fourth is the...
The fifty-fifth is the...
The fifty-sixth is the...
The fifty-seventh is the...
The fifty-eighth is the...
The fifty-ninth is the...
The sixtieth is the...
The sixty-first is the...
The sixty-second is the...
The sixty-third is the...
The sixty-fourth is the...
The sixty-fifth is the...
The sixty-sixth is the...
The sixty-seventh is the...
The sixty-eighth is the...
The sixty-ninth is the...
The seventieth is the...
The seventy-first is the...
The seventy-second is the...
The seventy-third is the...
The seventy-fourth is the...
The seventy-fifth is the...
The seventy-sixth is the...
The seventy-seventh is the...
The seventy-eighth is the...
The seventy-ninth is the...
The eightieth is the...
The eighty-first is the...
The eighty-second is the...
The eighty-third is the...
The eighty-fourth is the...
The eighty-fifth is the...
The eighty-sixth is the...
The eighty-seventh is the...
The eighty-eighth is the...
The eighty-ninth is the...
The ninetieth is the...
The ninety-first is the...
The ninety-second is the...
The ninety-third is the...
The ninety-fourth is the...
The ninety-fifth is the...
The ninety-sixth is the...
The ninety-seventh is the...
The ninety-eighth is the...
The ninety-ninth is the...
The hundredth is the...





About the Exhibition

Mockup is a storage room, a stage set, a mausoleum, a trade show, a diagram, a game board, a studio, a retail store, a pictograph, a classroom, a museum display, an architectural model, and a sign-maker's workshop. Like composite wood -- the material from which the artworks are made -- each object is at once real and solid, and simultaneously a mere semblance or substitute.

About the Artist

Daniel Lefcourt's recent one-person exhibitions have been held with Taxter & Spengemann, New York; Sutton Lane, London; Luis Campaña Galerie, Berlin; and Mitterand & Sanz, Zurich. His work has been included in numerous group exhibitions including *The Blind Cut*, Marlborough Gallery, New York; *Knight's Move*, SculptureCenter, Long Island City; *The Perpetual Dialogue*, Andrea Rosen, New York; *Subject Index*, Malmo KonstMuseum, Malmo, Sweden; *Do You Like Stuff?*, The Swiss Institute, New York; and *Greater New York*, MoMA P.S.1 Contemporary Art Center, Long Island City. Daniel Lefcourt earned his BFA from the Rhode Island School of Design in 1997, and his MFA at Columbia University in 2005. He lives and works in Brooklyn, New York.

Daniel Lefcourt's work appears courtesy Mitchell-Innes & Nash, New York.

White Flag Projects

Matthew Strauss
Founder/Director

Jessica Baran
Assistant Director

B.J. Vogt
Installations Manager

H. Lindsay Donahue
Events Coordinator

Melissa Gollance, Rebecca Naegele, Liz Prentice, Edo Rosenblith, Stephanie Trimboli
Interns

Daniel Lefcourt: Mockup has been made possible with support from The Andy Warhol Foundation for the Visual Arts, the White Flag Projects Board of Directors, and our members. Opening reception sponsored in part by Schlafly Beer. Special thanks to Bruce Burton and Eric Derry.

This exhibition has been made possible with additional support from Emily Rauh Pulitzer.

WHITE FLAG PROJECTS
4568 Manchester Avenue
Saint Louis, Missouri 63110

www.whiteflagprojects.org

WHITE FLAG PROJECTS